



ACQUERELLI ARTIGIANALI  
HANDMADE IN ITALY



**Buff titanium**  
Series 2 201  
PW6:I  
8 • NS • Y • ☉



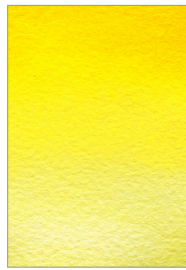
**NEW! Titanium yellow hue**  
Series 2 261  
PY3, PW4, PY43  
8 • MS • N • ☉



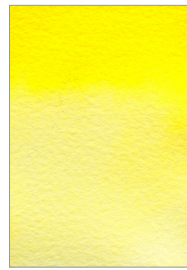
**Lemon yellow**  
Series 2 202  
PY3  
7 • NS • N • ☉



**Lemon yellow, perm.**  
Series 2 203  
PY184  
8 • NS • N • ☉



**Azo yellow gold**  
Series 2 204  
PY151, PY43  
8 • MS • Y • ☉



**Royal yellow**  
Series 2 205  
PY154  
8 • MS • N • ☉



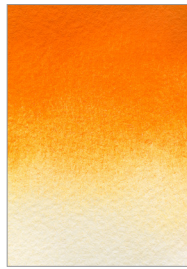
**Indian yellow**  
Series 2 208  
PY110, PY154  
8 • MS • N • ☉



**Arancione**  
Series 2 210  
PY83, PV19, PR101  
8 • MS • N • ☉



**Hokkaido orange**  
Series 2 211  
PY216  
8 • MS • Y • ☉



**NEW! Pyrrole orange**  
Series 3 337  
PO73  
8 • MS • N • ☉



**Vermilion red**  
Series 3 303  
PR255  
8 • MS • N • ☉



**NEW! Cinabro hue**  
Series 3 302  
PW27, PR101, PR254  
8 • MS • Y • ☉



**Medici red**  
Series 3 304  
PR168  
7-8 • MS • N • ☉



**Scarlet red**  
Series 2 212  
PR254  
8 • MS • N • ☉



**Ruby red**  
Series 3 305  
PR264  
8 • MS • N • ☉



**Alizarin crimson hue**  
Series 2 214  
PR177, PR144, PV19  
7-8 • MS • N • ☉



**Permanent carmine**  
Series 3 306  
PV19  
8 • MS • N • ☉



**Quinacridone magenta**  
Series 2 216  
PR122  
7 • MS • N • ☉



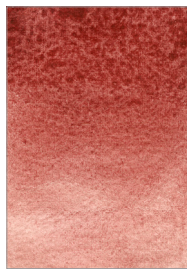
**Ultramarine pink**  
Series 2 215  
PR259  
8 • NS • N • ☉



**Pietra rosa**  
Series 3 310  
PR233, PV19, PV16  
8 • NS • Y • ☉



**Potter's pink**  
Series 3 311  
PR233  
8 • NS • Y • ☉



**Rose Madder**  
Series 4 401  
NR9  
3 • NS • Y • ☉



**Dragon's Blood**  
Series 3 330  
NR31  
3 • NS • Y • ☉



**NEW! Lilac**  
Series 3 313  
PR233, PV15, PV16  
8 • NS • Y • ☉



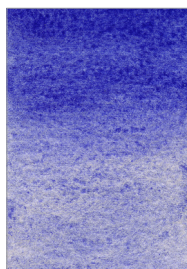
**Quinacridone violet**  
Series 2 217  
PV55  
8 • MS • N • ☉



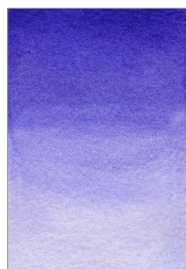
**Mineral violet**  
Series 2 218  
PVI6  
8 • NS • Y • ☉



**Tyrian purple**  
Series 2 219  
PVI5, PVI6  
8 • NS • Y • ☉



**NEW! Han purple**  
Series 4 405  
Copper silicate and Barium  
8 • NS • Y • ☉



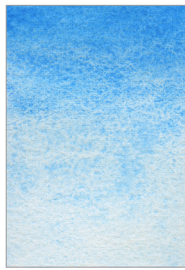
**Ultramarine violet**  
Series 2 220  
PVI5  
8 • MS • Y • ☉



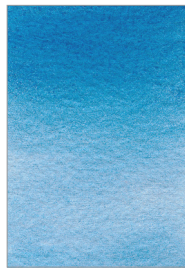
**Dioxazine violet**  
Series 3 314  
PV37  
8 • S • N • ☉



**Notturmo**  
Series 3 221  
PB29, PR101, PV19  
8 • S • Y • ⊙



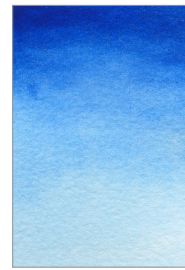
**Zirconium blue**  
Series 3 315  
PB71  
8 • NS • Y • ⊙



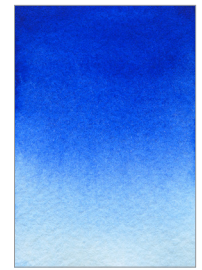
**NEW! Azurite hue**  
Series 3 317  
Sodalite, PB15:3, PB29, PW4, PY43  
8 • MS • Y • ⊙



**Cerulean hue**  
Series 2 222  
PB15:3, PW4, PB29  
8 • MS • N • ⊙



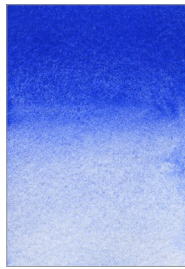
**Transparent cerulean**  
Series 2 223  
PB15:3  
8 • MS • N • ⊙



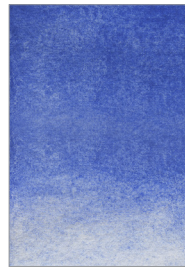
**Azzurro**  
Series 2 224  
PB29, PB15:3  
8 • MS • N • ⊙



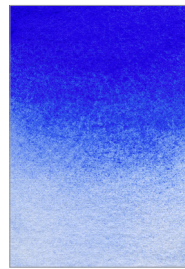
**NEW! Phthalo blue (BS)**  
Series 2 262  
PB15:1  
8 • S • N • ⊙



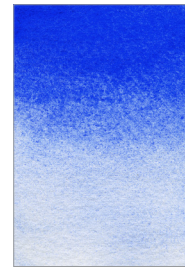
**YnMn blue**  
Series 5 501  
PB86  
8 • MS • Y • ⊙



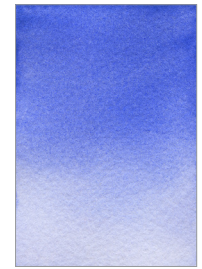
**Lapis lazuli**  
Series 4 402  
Fra Angelico, genuine  
8 • NS • Y • ⊙



**Ultramarine blue**  
Series 2 228  
PB29  
8 • MS • Y • ⊙



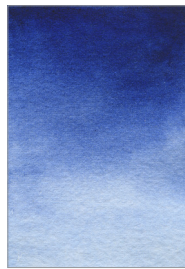
**Ultramarine blue dark**  
Series 2 225  
PB29  
8 • MS • Y • ⊙



**Periwinkle**  
Series 2 227  
PB15:1, PB29, PW6, PR122  
8 • MS • N • ⊙



**Midnight blue**  
Series 2 226  
PB15:1, PBk9  
8 • MS • N • ⊙



**Indanthrone blue**  
Series 3 316  
PB60  
8 • MS • N • ⊙



**Copper blue**  
Series 2 231  
PW4, PG7, PB15:3, PY3  
8 • MS • N • ⊙



**Teal blue**  
Series 2 230  
PB15:3, PG7, PW6  
8 • MS • N • ⊙



**Aquamarine**  
Series 2 232  
PB15:4, PG7, PB29  
8 • MS • N • ⊙



**Harbor blue**  
Series 2 233  
PB15:3, PBk8  
8 • MS • Y • ⊙



**Dark forest**  
Series 3 234  
PG7, PBk7, PY43  
8 • MS • Y • ⊙



**Perylene green**  
Series 3 320  
PBk31  
8 • MS • N • ⊙



**Forest green**  
Series 2 235  
PG7, PBk7, PY43  
8 • MS • N • ⊙



**Green earth, cool**  
Series 1 101  
PG23  
8 • MS • N • ⊙



**Deep sea green**  
Series 3 321  
PG18, PB29  
8 • NS • Y • ⊙



**NEW! Ultramarine turquoise**  
Series 2 259  
PB29, PG7  
8 • MS • Y • ⊙



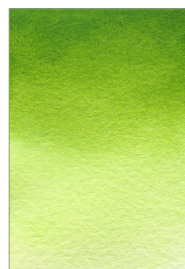
**Viridian hue**  
Series 2 236  
PG7, PB29  
8 • MS • N • ⊙



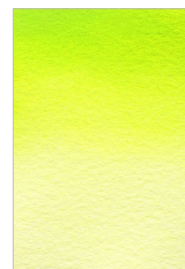
**NEW! Malachite hue**  
Series 3 322  
Amazonite, PG18, PW4, PY3  
8 • NS • Y • ⊙



**Spring green**  
Series 2 238  
PG7, PY184, PB29  
8 • MS • N • ⊙



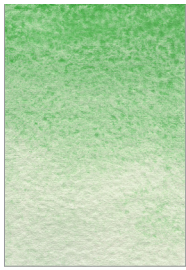
**Sap green**  
Series 3 326  
PY83, PG36, PV19, PR101  
8 • MS • N • ⊙



**Phthalo green light**  
Series 2 239  
PY184, PG36  
8 • NS • N • ⊙



**Fig green**  
Series 2 240  
PY151, PG17  
8 • MS • N • ⊙



**NEW! Victoria green**  
 Series 2 237  
 PG51  
 8 • NS • Y • ○



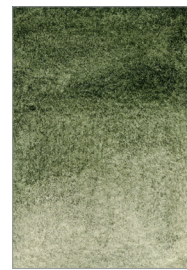
**Chromium oxide**  
 Series 2 242  
 PG17  
 8 • MS • N • ●



**Green earth, warm**  
 Series 1 102  
 PG23  
 8 • NS • Y • ○



**Olive green deep**  
 Series 2 244  
 PY154, PY110, PB29  
 8 • MS • Y • ●



**NEW! Indigo green**  
 Series 3 319  
 NY2, NBI  
 6 • MS • Y • ○



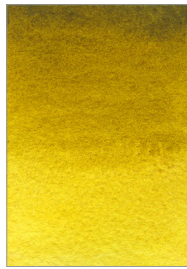
**Verdaccio**  
 Series 1 105  
 PBr7, PBk11  
 8 • MS • N • ○



**Green umber**  
 Series 1 106  
 PBr8  
 8 • NS • Y • ○



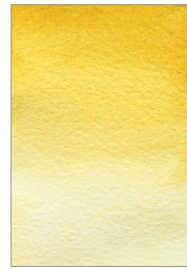
**NEW! Buckthorn berry green**  
 Series 3 324  
 NG2  
 4 • NS • N • ○



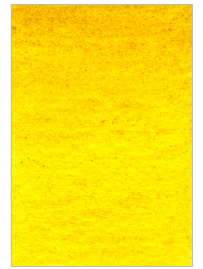
**Green gold**  
 Series 3 327  
 PY150, PY184, PG36  
 8 • MS • N • ○



**French ochre, sahara**  
 Series 1 104  
 PY43  
 8 • MS • N • ○



**Jarosite**  
 Series 2 108  
 PY43  
 8 • MS • N • ○



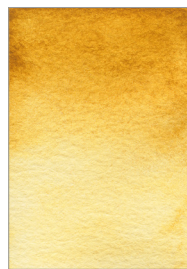
**NEW! Stil de grain, light**  
 Series 4 400  
 NY14  
 NR • NS • N • ○



**Gold ochre**  
 Series 1 109  
 PY43  
 8 • MS • N • ○



**Moroccan yellow ochre**  
 Series 2 245  
 PY43  
 8 • MS • Y • ●



**Raw sienna**  
 Series 1 111  
 PY43  
 8 • MS • Y • ○



**Raw sienna, Badia**  
 Series 2 247  
 PY43  
 8 • MS • Y • ○



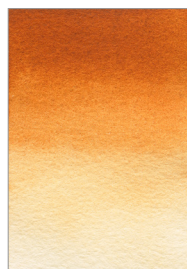
**Yellow ochre, Burgundy**  
 Series 2 246  
 PY43  
 8 • MS • Y • ●



**Quinacridone gold**  
 Series 3 328  
 PY150, PR101, PV19  
 8 • MS • N • ○



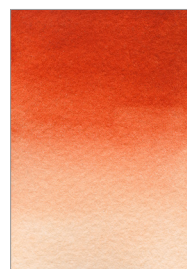
**NEW! Orange iron oxide**  
 Series 3 301  
 PR102  
 8 • NS • Y • ○



**Castile orange**  
 Series 2 248  
 PR102, PY43  
 8 • MS • N • ○



**Transparent red oxide**  
 Series 3 333  
 PR101  
 8 • MS • Y • ○



**Ercolano red**  
 Series 1 114  
 PR102, PR101  
 8 • MS • N • ○



**Burnt sienna, Mt. Amiata**  
 Series 2 115  
 PBr7  
 8 • NS • Y • ○



**Sartorio red**  
 Series 1 116  
 PR102  
 8 • MS • Y • ○



**Venetian red**  
 Series 1 118  
 PR102  
 8 • S • N • ●



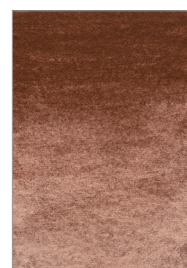
**Hematite**  
 Series 1 120  
 PR102  
 8 • S • Y • ●



**NEW! English red**  
 Series 1 119  
 PR101  
 8 • MS • N • ●



**NEW! Leighton red ochre**  
 Series 2 249  
 PR102  
 8 • NS • N • ○



**NEW! Icelandic red earth**  
 Series 3 312  
 Natural earth  
 8 • NS • Y • ○



**Morellone**  
 Series 2 250  
 PR101  
 8 • S • Y • ●



**NEW! Perylene maroon**  
 Series 3 332  
 PR179  
 8 • S • N • ○



**Burnt umber, Cyprus**  
 Series 1 122  
 PBr8  
 8 • MS • Y • ○



**Sepia**  
 Series 1 126  
 PBk9, PBr7  
 8 • S • Y • ●



**NEW! Van Dyck brown**  
 Series 1 125  
 NBr8  
 8 • MS • N • ○



**Burnt umber, brownish**  
 Series 1 123  
 PBr8  
 8 • MS • Y • ○



**Burnt umber, dark**  
 Series 1 124  
 PBr7  
 8 • MS • Y • ●



**Chromite brown**  
 Series 1 132  
 FeCr2O4, PBr8  
 8 • MS • Y • ●



**NEW! Meteorite brown**  
 Series 4 410  
 Chondrites, genuine  
 8 • NS • Y • ○



**Indigo**  
 Series 3 334  
 NB1  
 7 • MS • N • ○



**Payne's gray**  
 Series 2 254  
 PB15:1, PBk7, PV19  
 8 • S • N • ○



**NEW! Neutral tint**  
 Series 2 263  
 PBk7, PR122, PB15:3  
 8 • MS • N • ○



**NEW! Vivianite**  
 Series 4 408  
 Vivianite, genuine  
 8 • NS • Y • ○



**Roman black earth**  
 Series 1 128  
 PBk11  
 8 • MS • Y • ○



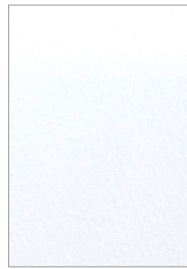
**Ivory black**  
 Series 1 130  
 PBk9  
 8 • MS • N • ○



**NEW! Tourmaline**  
 Series 3 318  
 Tourmaline, genuine  
 8 • NS • Y • ○



**Slate gray**  
 Series 2 258  
 PBk19  
 8 • NS • N • ○



**NEW! Chinese white**  
 Series 2 260  
 PW4  
 8 • NS • N • ○



**Titanium white**  
 Series 1 138  
 PW6  
 8 • MS • N • ●



**Antique gold**  
 Series 3 335  
 metallic pigment, PY43  
 8 • MS • N • ●



**NEW! Bronze**  
 Series 3 336  
 metallic pigment, PR101, PY43  
 8 • MS • N • ●

**COLOR INFORMATION** from left to right (8 NS Y ●)

**LIGHTFASTNESS RATING 1-8**  
 (According to the Blue Wool Scale)

8 - Excellent Lightfastness  
 7 - Very Good Lightfastness

**NON-STAINING/STAINING**

NS - Non-Staining S - Staining  
 MS - Medium Staining

**GRANULATION**

N - No  
 Y - Yes, varying degrees

**TRANSPARENCY**

○ - Transparent ● - Semi-Transparent  
 ○ - Semi-Transparent ● - Opaque